

FIGURE 6.1 When the bar magnet is pushed towards the coil, the pointer in the galvanometer G deflects.

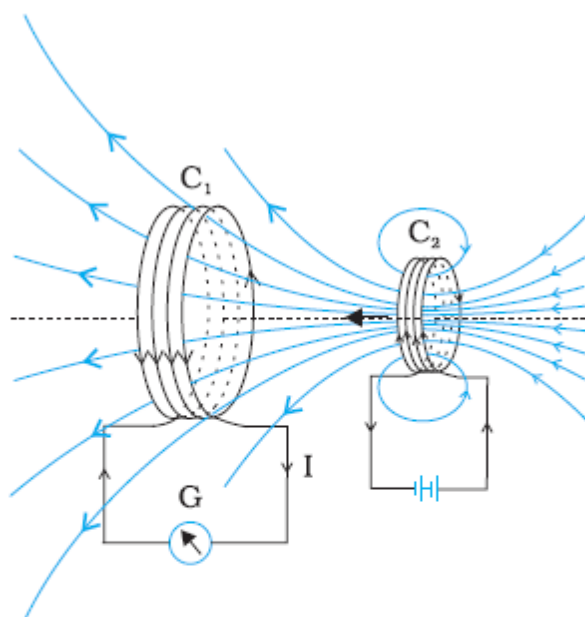


FIGURE 6.2 Current is induced in coil C_1 due to motion of the current carrying coil C_2 .

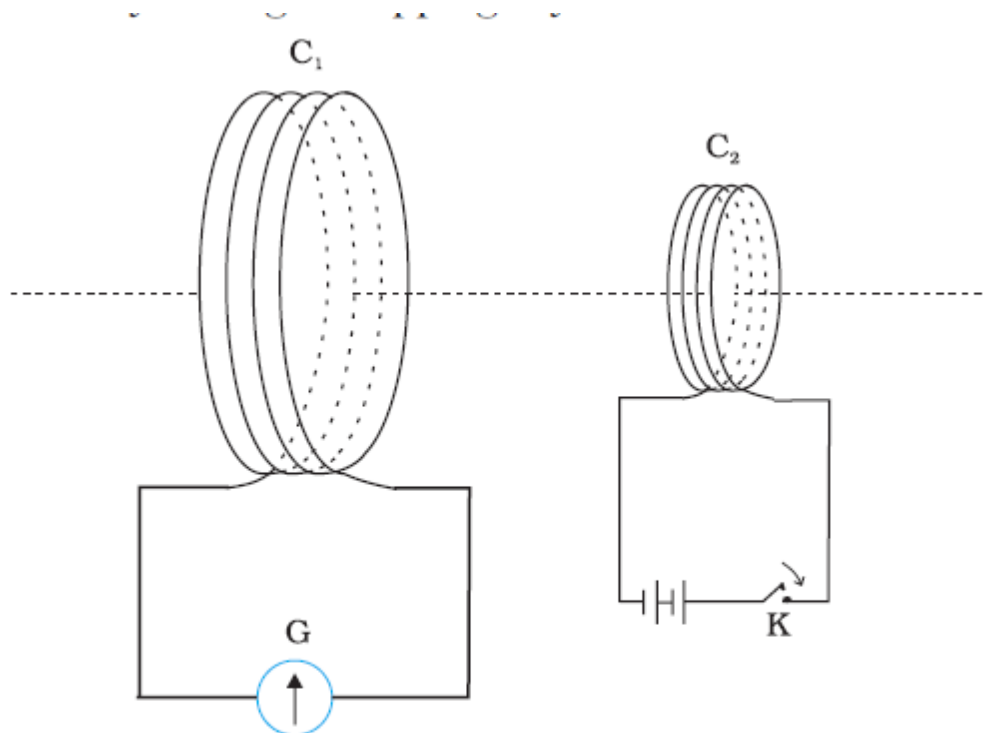


FIGURE 6.3 Experimental set-up for Experiment 6.3.

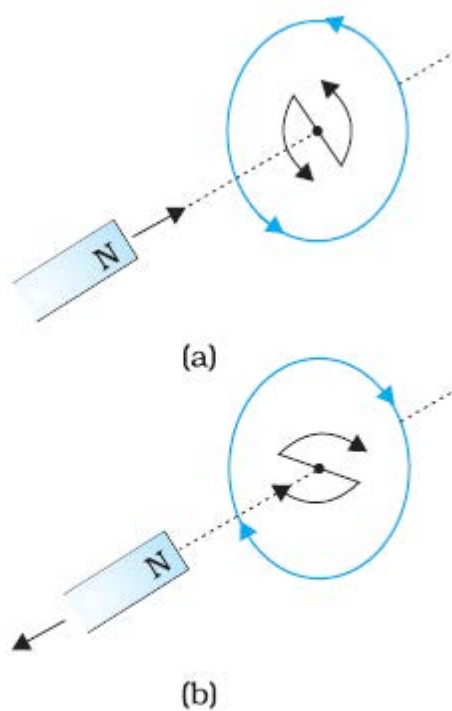


FIGURE 6.6
Illustration of
Lenz's law.

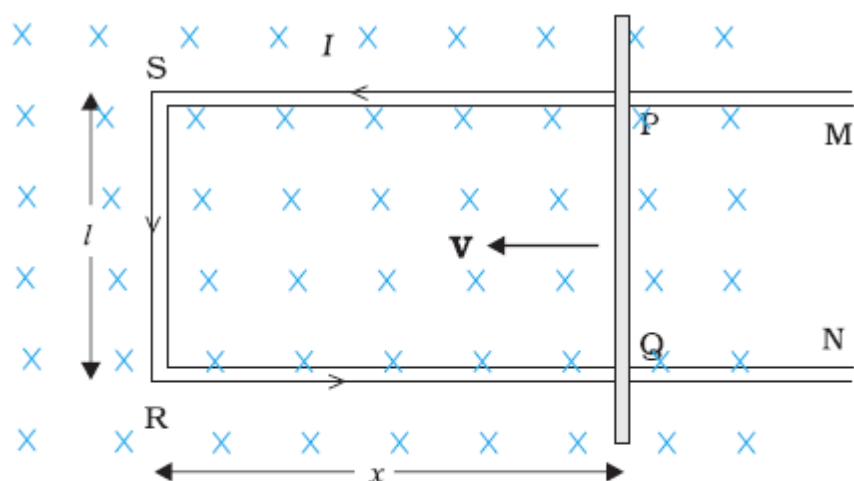


FIGURE 6.10 The arm PQ is moved to the left side, thus decreasing the area of the rectangular loop. This movement induces a current I as shown.

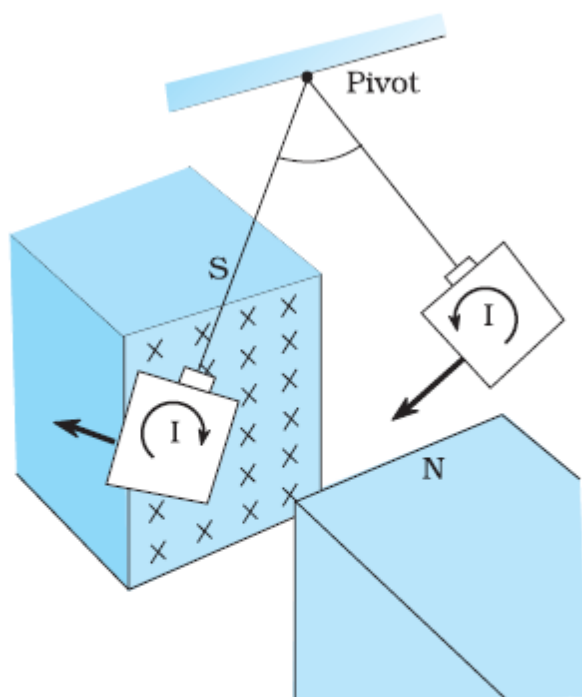


FIGURE 6.13 Eddy currents are generated in the copper plate, while entering and leaving the region of magnetic field.

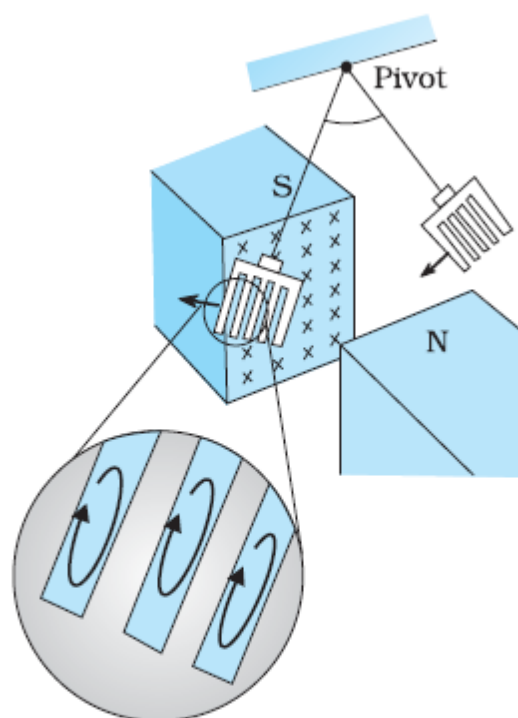


FIGURE 6.14 Cutting slots in the copper plate reduces the effect of eddy currents.

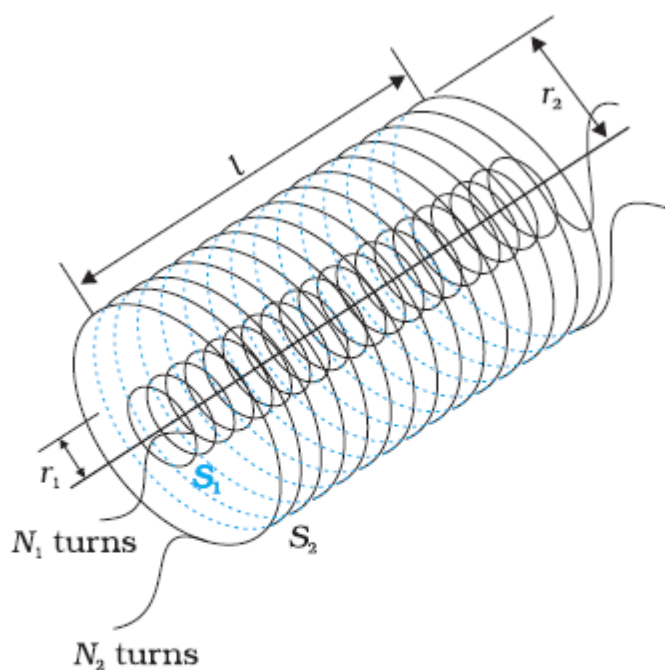


FIGURE 6.15 Two long co-axial solenoids of same length l .

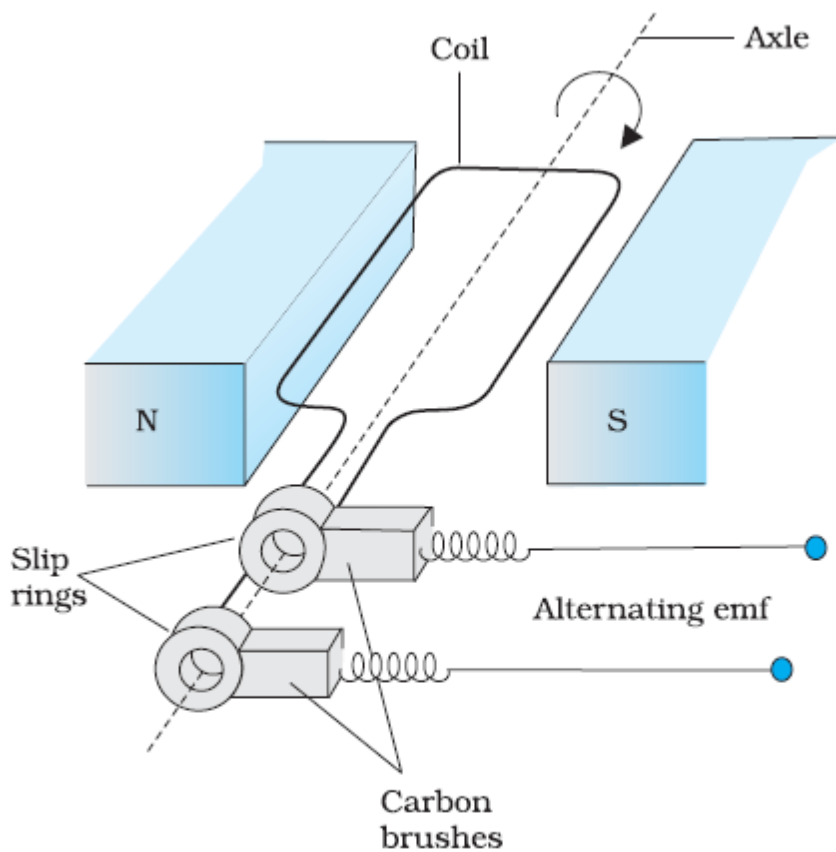


FIGURE 6.16 AC Generator

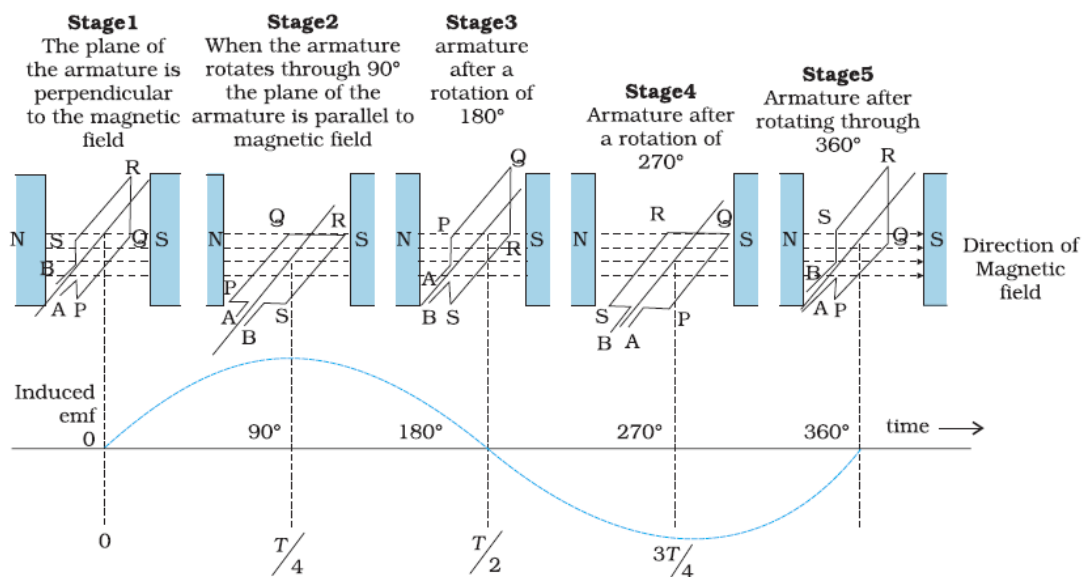


FIGURE 6.17 An alternating emf is generated by a loop of wire rotating in a magnetic field.